

- Meets or exceeds ANSI/BIFMA and ISTA performance standards.
- Standard with swivel, tilt, tilt tension, tilt lock and pneumatic seat height adjustment.
- Visco-elastic memory foam in the seat cushion – responds to the contours of the body.
- Fully upholstered outer back.
- The HON® Limited Lifetime Warranty.



Pillow-Soft™

A. Executive Chair with Arms

2091 List ~~\$377~~ **\$247**

Available: Gravel, Iron, Claret or Navy on Black base.



BW16 Gravel

BW19 Iron



BW69 Claret

BW90 Navy

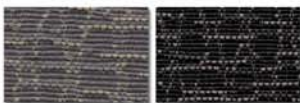


- Meets or exceeds ANSI/BIFMA and ISTA performance standards.
- High-back executive with fabric upholstery.
- Deeply contoured back for lumbar support.
- Sculpted arms with coordinating five-star base.
- Pneumatic, swivel, tilt, tilt tension and tilt lock controls.
- The HON® Limited Lifetime Warranty.

B. High-Back Executive Chair

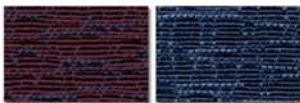
2041 List ~~\$299~~ **\$196**

Available: Gravel, Iron, Claret or Navy on Black base.



BW16 Gravel

BW19 Iron



BW69 Claret

BW90 Navy

