

*Park Avenue*  
COLLECTION®



Fully-upholstered sofa, love seat and arm chair provide exceptional comfort that will invite your guests to stay awhile. Painted legs and a variety of stylish upholstery choices provide you with attractive guest seating to complement any decor. Made exclusively for The HON Company by Flexsteel®.

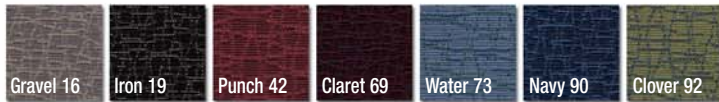
- Contemporary styling with a slightly arched back.
- Plush, individual seat cushions feature high-resiliency foam and are reversible – can be flipped for better wear.
- Painted legs: Black or Titanium.
- Fully upholstered outer back.
- Covered by the HON® Limited Lifetime Warranty.

**Fabric Selections: Grade III**

**Confetti - AB**



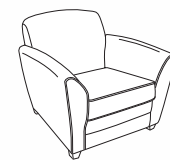
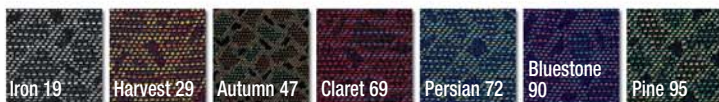
**Curfew - BW**



**Encore - BE**



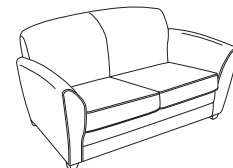
**Prisma - BP**



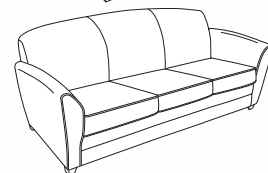
**Arm Chair**  
PAA01 List ~~\$1196~~ **\$782**



**Swivel/Glide Arm Chair**  
Black Base  
PAA11 List ~~\$1404~~ **\$918**



**Love Seat**  
PAL02 List ~~\$1638~~ **\$1071**



**Sofa**  
PAS03 List ~~\$1924~~ **\$1258**